



# Optimizing Data Analytics with Trino and Exasol



# Thomas Bestfleisch

Senior Product Manager | Exasol



# Exasol in a minute

## The **Worlds Fastest** Analytical Database

for secure, time critical analytics supporting data services/products



**200+**  
PROVEN SUCCESS Customers

**100+**  
PARTNERSHIPS  
Technology or consultancy partners

**30+**  
COUNTRIES  
Worldwide presence: North America, EMEA and Asia

- More than 20 years of experience in the field
- 200+ employees
- Public company since 2020
  - Investor relations [here](#)
- In-memory, columnar analytics
- Low TCO
- Deploy anywhere
- ML at scale




Mercedes-Benz



T Mobile



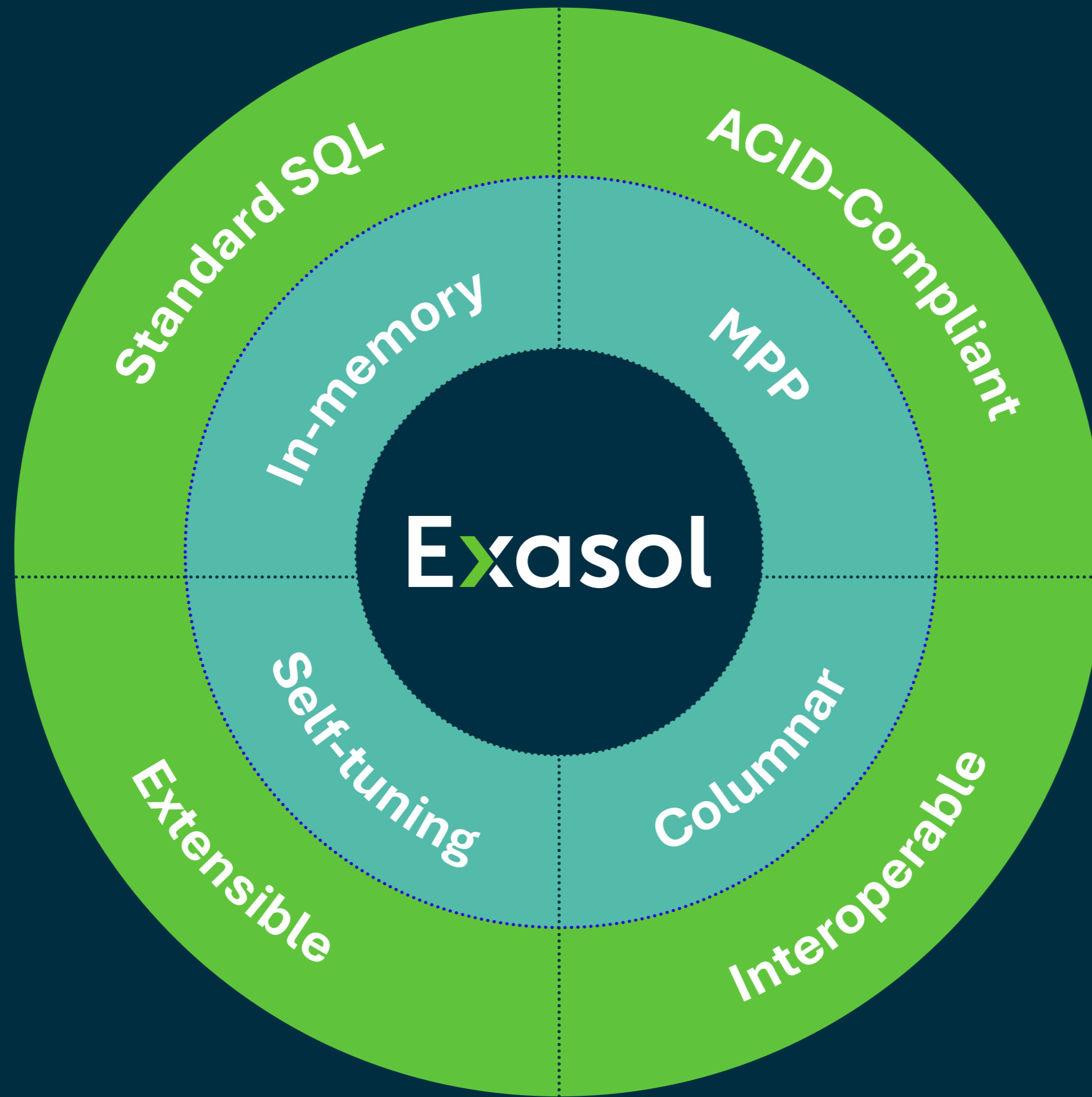
MONSOON



# Built for speed: Exasol versus the competition

- <https://www.youtube.com/watch?v=ylgFxRdMydw>

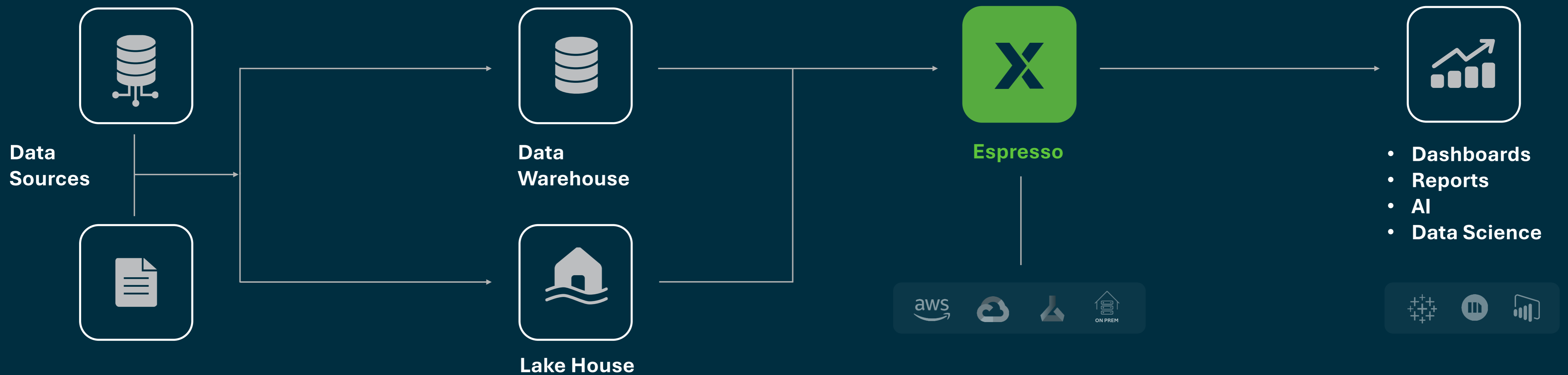
# Exasol's Core



# The world's fastest, most versatile query engine that plugs right into your data stack.

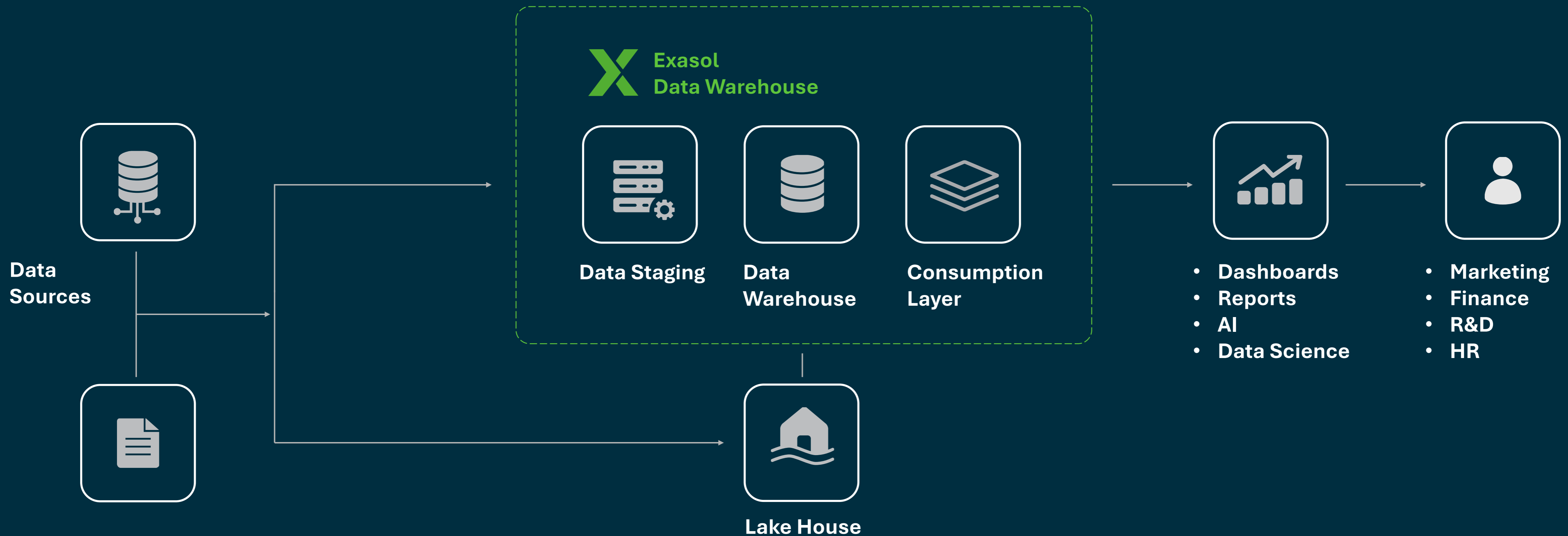
Espresso builds a cache of relevant data, and with the optional AI-powered add-on from Veezoo, customers can query data just by asking or typing questions using natural, everyday language, just like ChatGPT.

Espresso sits seamlessly as a consumption layer between the data warehouse or data lake and whichever BI frontend is used, working smoothly with Tableau, Power BI, MicroStrategy and more.



# Unlimited division-wide performance

Replace your existing legacy system with our full-service DWH solution for optimal cost performance. Insert more technical copy replace the animation with a DWH data stack.



# What is the Exasol Connector for Trino ?

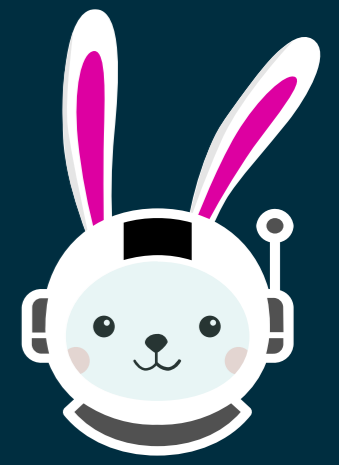


- The Exasol Connector allows querying an Exasol from Trino
- Currently only read-only, no writeback possible
- Details can be found here <https://trino.io/docs/current/connector/exasol.html>

```
Trino
1 CREATE CATALOG exasol_example USING exasol
2 WITH (
3     "connection-url" = 'jdbc:exa:demodb.exasol.com',
4     "connection-user" = 'EXASOL_TB',
5     "connection-password" = '*****'
6 );
7
8
```



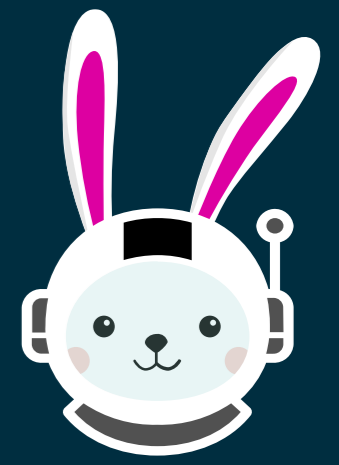
# Trino + Exasol: Better together



## Data Lake Querying with High-Performance SQL Analytics

- Utilize **Trino** to query large datasets stored in data lakehouses where the data is distributed across multiple storage formats and sources.
- Use **Exasol** for high-performance SQL analytics to process and analyze the results from Trino's queries, leveraging Exasol's in-memory computing capabilities for fast analytical queries.

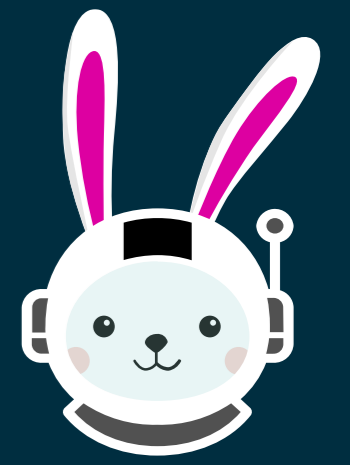
# Trino + Exasol: Better together



## Data Warehousing

- **Trino:** Use Trino to access and query raw or semi-structured data directly from your data lake or storage system and build the data warehouse structures
- **Exasol Gold Layer:** Move the summarized or processed data into Exasol's data mart for feeding into Business Intelligence (BI) tools, dashboards, and reporting systems, leveraging Exasol for fast queries and complex aggregations.

# Trino + Exasol: Better together



## Machine Learning and AI

- **Trino:** Facilitate data scientists to access and prepare large and diverse datasets stored in various environments for machine learning model training.
- **Exasol:** Utilize Exasol's processing power for feature engineering, model training and running predictions inside the database efficiently on large prepared datasets.



Q & A